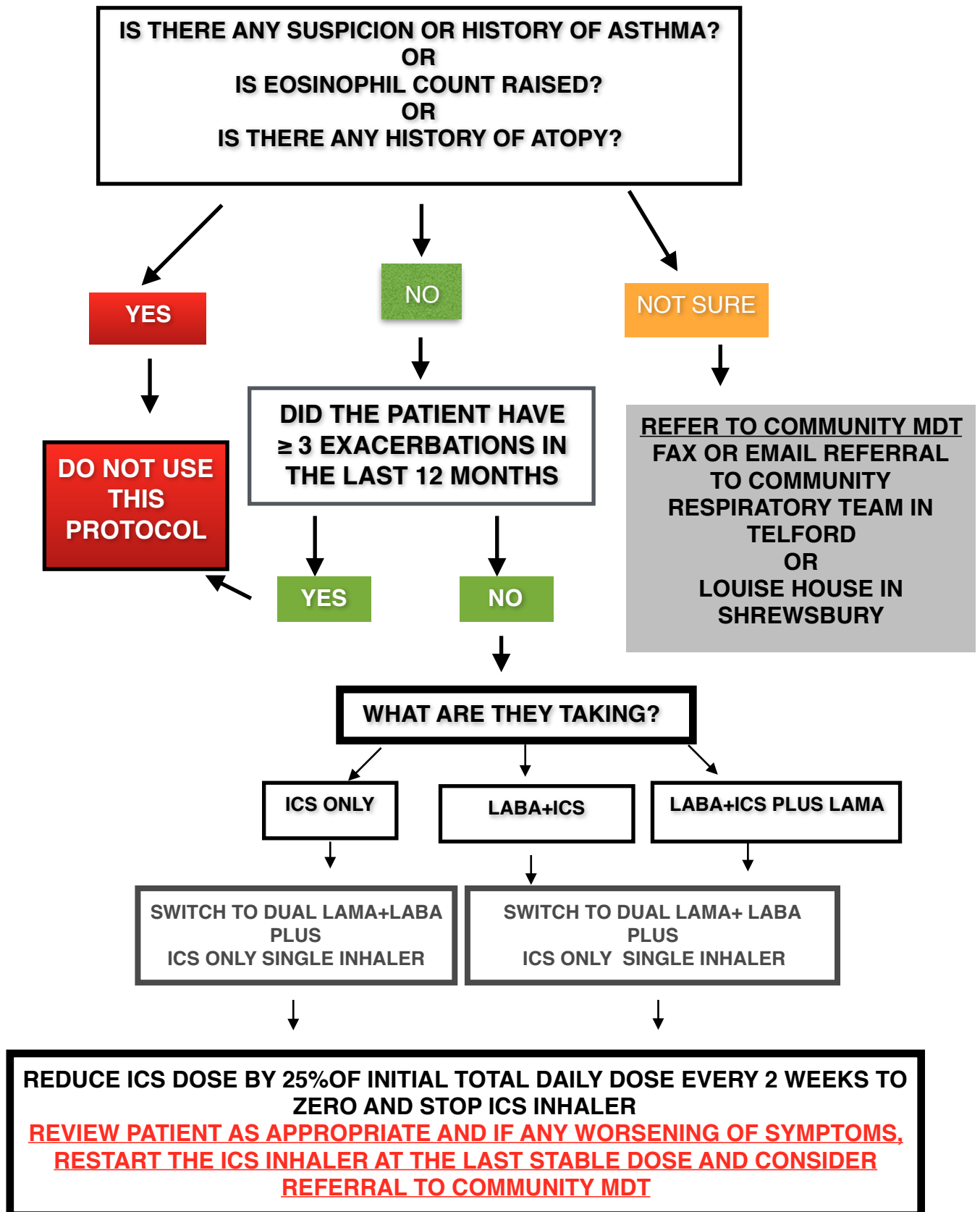


# Protocol for weaning COPD patients on Inhaled Corticosteroids (Either as single or combination inhaler) to a Dual Bronchodilator Treatment

**Evidence considered**

Samy Suissa and Andrea Rossi. Weaning from inhaled corticosteroids in COPD: the evidence. European Respiratory Journal 2015 46: 1232-1235



**LABA= LONG ACTING BETA AGONIST e.g. Salmeterol, Indacaterol**  
**LAMA= LONG ACTING ANTI-MUSCARINIC e.g. Tiotropium, Glycopyrronium, Umeclidinium, Aclidinium**  
**ICS= INHALED CORTICOSTEROID e.g. Beclomethasone, Budesonide, Fluticasone**

**\* PLEASE SEE SHROPSHIRE COPD GUIDELINES FOR LAMA+LABA INHALERS**

### **SCENARIO 1**

SERETIDE 500 1 PUFF BD [Salmeterol 50mcg (LABA)+Fluticasone 500 mcg (ICS) per puff]  
**25% reduction in total initial ICS dose = 25 % of 1000 mcg= 250 mcg reduction every 2 weeks**

#### **CHANGE TO**

LAMA+LABA COMBINATION (SEE GUIDELINES\*)  
Plus  
FLUTICASONE Inhaler 250 2 Puffs AM and 2 Puffs PM

#### **AT 2 WEEKS**

LAMA+LABA  
Plus  
FLUTICASONE 250 1 Puff AM and 2 Puffs PM

#### **AT 4 WEEKS**

LAMA+LABA  
Plus  
FLUTICASONE 250 1 Puff AM and 1 Puff PM

#### **AT 6 WEEKS**

LAMA+LABA  
Plus  
FLUTICASONE 125 1 Puff AM and 1 Puff PM

#### **AT 8 WEEKS**

LAMA+LABA  
Plus STOP ICS INHALER

### **SCENARIO 2**

FOSTAIR 100/6 2 PUFFS BD [Formoterol 6mcg (LABA)+ Beclomethasone 100 mcg (ICS) per puff]  
**25% reduction in total initial ICS dose= 25% of 400 mcg= 100mcg reduction every 2 weeks**

#### **CHANGE TO**

LAMA+LABA COMBINATION (SEE GUIDELINES)  
Plus  
CLENIL MODULITE (100 mcg) OR QVAR (50 mcg)\* 2 Puffs AM and 2 Puffs PM

#### **AT 2 WEEKS**

LAMA+LABA  
Plus  
CLENIL MODULITE (100 mcg) OR QVAR (50 mcg)\*1 Puff AM and 2 Puffs PM

#### **AT 4 WEEKS**

LAMA+LABA  
Plus  
CLENIL MODULITE (100 mcg) OR QVAR (50 mcg)\*1 Puff AM and 1Puff PM

#### **AT 6 WEEKS**

LAMA+LABA  
Plus  
CLENIL MODULITE (100 mcg) OR QVAR (50 mcg)\* 1Puff PM

#### **AT 8 WEEKS**

LAMA+LABA  
Plus STOP ICS INHALER

### **SCENARIO 3**

SYMBICORT 400/12 1 PUFF BD  
[Formoterol 12 mcg (LABA)+Budesonide 400 mcg (ICS) per puff]  
**25% reduction in total initial ICS dose= 25% of 800 mcg= 200 mcg reduction every 2 weeks**

#### **CHANGE TO**

LAMA+LABA COMBINATION (SEE GUIDELINES)  
PLUS  
CLENIL MODULITE (200 mcg) OR QVAR (100 mcg)\* 2 Puffs AM and 2 Puffs PM

#### **AT 2 WEEKS**

LAMA+LABA  
Plus  
CLENIL MODULITE (200 mcg) OR QVAR (100 mcg)\*1 Puff AM and 2 Puffs PM

#### **AT 4 WEEKS**

LAMA+LABA  
Plus  
CLENIL MODULITE (200 mcg) OR QVAR (100 mcg)\*1 Puff AM and 1Puff PM

#### **AT 6 WEEKS**

LAMA+LABA  
Plus  
CLENIL MODULITE (100 mcg) OR QVAR (50 mcg)\* 1Puff AM 1 Puff PM

#### **AT 8 WEEKS**

LAMA+LABA  
Plus STOP ICS INHALER

**\*QVAR has double the potency of Clenil, hence 50 mcg dose used.**

**Also, Fluticasone:beclometasone:budesonide potency ratio is 1:2:2**

**Fluticasone 200 mcg=Beclometasone 400 mcg=Budesonide 400 mcg**