

Shropshire and Telford & Wrekin Maternity Services

Making sense of what's happening to the Maternity Services in Shropshire and Telford & Wrekin.

NHS Shropshire and NHS Telford & Wrekin Clinical Commissioning Groups are responsible for designing and buying healthcare services for people in Shropshire and Telford & Wrekin. The healthcare providers such as hospitals, community healthcare trusts and GPs are responsible for delivering healthcare services.

Currently, in Shropshire and Telford & Wrekin, there is a lot going on which is affecting our Maternity Services and this leaflet aims to help explain the different strands of work, with separate organisational responsibility, and how they all fit together.

Local Maternity System (LMS)

There is a national drive across England to transform maternity care in partnership with women and families who use these services. Across Shropshire we are rising to this challenge with the two NHS Shropshire and NHS Telford & Wrekin Clinical Commissioning Groups, Councils, healthcare providers and women and their families working together in the Local Maternity System (LMS) to deliver the outcomes and vision set out in "Better Births". Better Births is the report that was produced in 2016 following a national review of maternity care.

The purpose of a Local Maternity System (LMS) is to transform services so that local maternity and neonatal services become safer, more personalised, kinder, more professional and family friendly.

To find out more visit:

- <http://www.shropshireccg.nhs.uk/get-involved/reviews-and-projects/better-births-local-maternity-transformation-lms/>
- <https://www.telfordccg.nhs.uk/your-health/maternity-services>

Midwife Led Unit Review

NHS Shropshire and NHS Telford & Wrekin Clinical Commissioning Groups are reviewing how midwife led services meet the needs of local families and fulfil national guidelines.

A proposed new service model has been developed that seeks to transform midwifery led care services in Shropshire and Telford & Wrekin, improving their clinical and financial sustainability, as

well as improving access to services and outcomes for women and their families in line with Better Births.

A formal public consultation on the proposed new long-term sustainable model of care for midwife led services in Shropshire and Telford & Wrekin will take place later this year. The consultation will ask people from across the county to come forward and let us know their views on the proposal.

The proposed new service model developed through the Midwife Led Unit review will go some way towards delivering the transformation of maternity services in line with Better Births and the work of the Local Maternity System.

To find out more visit:

- <http://www.shropshireccg.nhs.uk/get-involved/reviews-and-projects/midwife-led-units-review/>
- <https://www.telfordccg.nhs.uk/your-health/maternity-services/midwife-led-unit-review>

The Shrewsbury and Telford Hospital NHS Trust (SaTH) Maternity Service Engagement

Shrewsbury and Telford Hospital NHS Trust (SaTH) provide the maternity services in Shropshire and Telford & Wrekin. These services are currently facing significant operational pressure and this has led to a number of adhoc, two and four-week suspensions of inpatient maternity services at Bridgnorth, Ludlow and Oswestry. These suspensions have been made under SaTH's escalation policy to ensure midwives are where mums are, to maintain women's safety. SaTH are carrying out a piece of engagement about the temporary suspension of inpatient services – including births and postnatal care – in Shropshire rural Midwife Led Units at Bridgnorth, Ludlow and Oswestry.

SaTH have therefore started a six-week period of engagement about a proposal to extend the period inpatient services are temporarily suspended in the rural Midwife Led Units (in Bridgnorth, Ludlow and Oswestry) until a new long term sustainable model of care can be implemented by the clinical commissioning groups, once the outcome of the Midwife Led Unit review is confirmed.

The engagement is seeking the views of women and families who have recently used or are currently using maternity services. The purpose of the engagement is to better understand how the proposal to extend the current temporary suspension of services will affect women and families and how Shrewsbury and Telford Hospital NHS Trust can help reduce the impact of these changes to best meet their needs.

The engagement period will run for six weeks from Tuesday 3 July until midnight on Monday 13 August 2018.

To find out more visit: <https://www.sath.nhs.uk/wards-services/az-services/maternity/>

Royal College of Obstetricians and Gynaecologists Review of the Shrewsbury and Telford Hospital NHS Trust Maternity Service

Two reports by the Royal College of Obstetricians and Gynaecologists reviewing the clinical practice within the Shrewsbury and Telford Hospital NHS Trust's maternity service have recently been published. The review was requested by the Trust following concern over higher than average perinatal mortality rates (still births and deaths within the first seven days of birth).

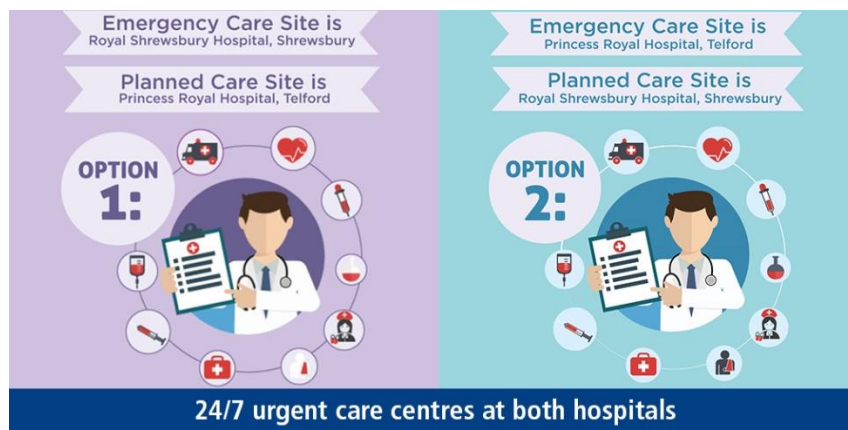
Since January, when the Trust received the first report, the maternity service has responded to the recommendations and made improvements with pace and focus. This was acknowledged in the Royal College's follow-up review where it found all recommendations had been addressed and the majority had been achieved.

The Trust welcomes the reports from the Royal College of Obstetricians and Gynaecologists and continues to focus on the ongoing work to address the outstanding recommendations to help improve outcomes and ensure the very best care for women and families living Shropshire.

To find out more visit: <https://www.sath.nhs.uk/news/royal-college-reviews-trusts-maternity-service/>

Future Fit Public Consultation

The Future Fit public consultation is about the services delivered at the Royal Shrewsbury Hospital and the Princess Royal Hospital. NHS Shropshire and NHS Telford & Wrekin Clinical Commissioning Groups (CCGs) are asking for the views of people across Shropshire, Telford & Wrekin and mid Wales on the following two options:



Under either option, a midwife-led unit would be provided at both hospitals.

Having a single Emergency Care site would mean that specialist doctors can treat the most serious cases in a dedicated emergency department, which is proven to be safer, provide better results for patients and reduce the amount of time people have to stay in hospital. Having a dedicated Planned Care site would mean that patients will wait less time for their appointments and beds would be protected for planned operations, meaning that is highly unlikely operations will be cancelled due to emergency admissions.

Most women and children would still receive care and treatment in the same place as they do now. The following women and children's services would be available at both hospitals:

- Midwife-led unit, including low-risk births and postnatal care
- Maternity outpatients, including antenatal appointments and scanning
- Early Pregnancy Assessment Service (EPAS)
- Antenatal Day Assessment
- Children's and neonatal outpatient appointments

The Future Fit proposal does not affect how maternity services are delivered in the community, however the outcome of the consultation will dictate where women and children's consultant-led inpatient services are situated as these have to be located alongside the Emergency Department on the Emergency Care site. For example, if option 1 (the CCGs' preferred option) was chosen, women and children's consultant-led inpatient services would be located at the Royal Shrewsbury Hospital as the Emergency Care site and if option 2 was chosen, they would be located at the Princess Royal Hospital.

We would welcome your views so please take part in the Future Fit consultation, which runs for 14 weeks from Wednesday 30 May until midnight on Tuesday 4 September.

For more information and to take part in our online survey, visit: www.nhsfuturefit.org